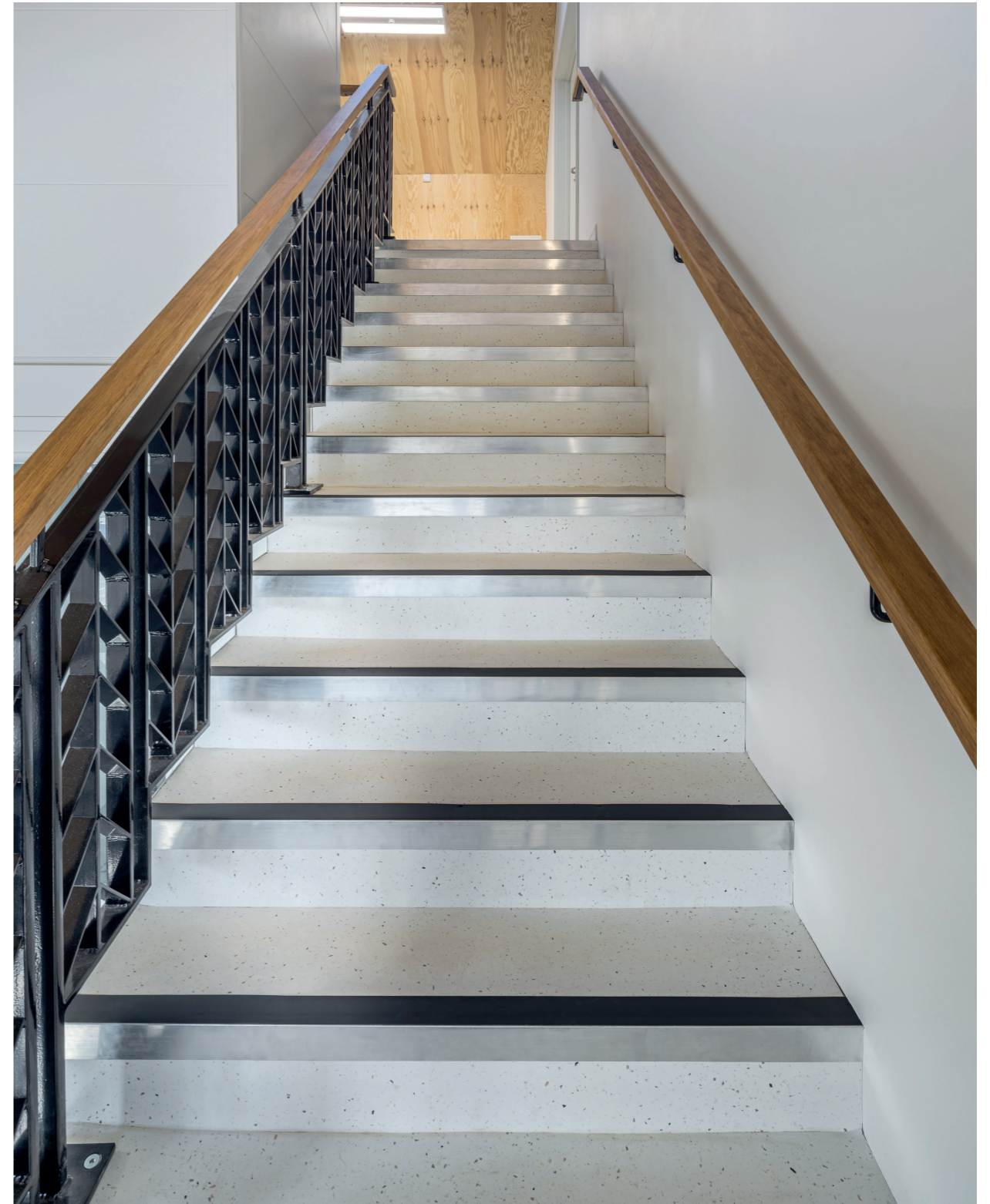


Accessories

Quintin Boat Club – Flooring Accessories Installation



“ On this project we used Gradus ADM1 and Mat in a Box 1550. Gradus are always our go to installer for accessories due to the great quality of materials and service. ”

Steve Fincham,
Director, Specialist Flooring Group

Product Specified:

- Gradus ADM1 Stair Edgings with Jet Standard Interior Insert
- Gradus TA5B Side Trims
- Gradus Mat in a Box 1550 (Black) in Tempestatas

Quintin Boat Club is a long-established rowing club based in Chiswick, West London. With a history spanning more than 100 years, the club welcomes everyone, from experienced rowers and scullers to complete beginners taking part in its Learn to Row courses. As the host of the annual Chiswick Regatta, on the river Thames, the club continues to invest in facilities that support safety, performance, and a positive experience for all visitors.

To support recent refurbishment works, Specialist Flooring Group selected a range of Gradus flooring accessories known for their durability, quality, and professional finish. This approach reflects the standards seen in other Gradus projects, where product durability and longevity are a priority.

Gradus Area Sales Manager Paul Gardner Smith supported Steve Fincham, Director at Specialist Flooring Group, throughout the project which focused on improving the safety and aesthetics of the stairways and in medium traffic areas. The ADM1 A-Range Aluminium Stair Edging with Jet Standard Interior Insert was selected to provide slip resistance and highlight the edge of the step, while the TA5B Aluminium Side Trims delivered a neat finish. Mat in a Box 1550 was also used to remove dirt and moisture at the entrance, reduce the risk of slips and decrease the maintenance of surrounding floor finishes.

The completed works provided Quintin Boat Club with a balance of high quality, safe, and aesthetic flooring accessories that will support members and visitors for years to come.

